



THE OHIO STATE UNIVERSITY COLLEGE OF MEDICINE

# Department of Emergency Medicine Residency Program



THE OHIO STATE  
UNIVERSITY  
WEXNER MEDICAL CENTER

## Our Mission

To guide the growth of compassionate, competent physicians in a safe, supportive, and inclusive environment who will lead the advancement of emergency medicine through clinical care, education, and research.

## Our Values

Care. Contribute. Connect.



### A Message From Our Chair

It's my pleasure to welcome you to the Department of Emergency Medicine's Residency Program at The Ohio State University and the Ohio State Wexner Medical Center. Having been part of this program for the past 16 years, I've had the opportunity to see it grow to one of the strongest programs in the country. As chair of the department, I'm excited about the innovation, energy and devotion of the residency leadership under the direction of Sorabh Khandelwal, MD; Krystin Miller, MD; Jennifer Yee, DO; Geremiha Emerson, MD; and Simiao Li-Sauerwine, MD. The residency program continues to provide our resident graduates with outstanding career opportunities in academia and community medicine. A large proportion of our graduates go on

to fellowship or academic positions, both remaining at Ohio State and continuing on at some of the other top institutions in the country. Just as importantly, those graduates who pursue a career in community medicine are highly sought after and frequently become leaders at their institutions.

The residency is located within a strong academic department with over 90 faculty members who have a wealth of experience in clinical medicine, education and research. Enriching our EM residency is our EM/IM residency with our collaborative partner, Internal Medicine.

Our Emergency Department opened in 2017 with nearly 110 beds, and includes several innovative care models, including oncologic emergencies, geriatric emergency care and observation medicine. We also offer excellent community experience at East Hospital and pediatrics experience through our partnership with Nationwide Children's Hospital.

We seek to train the Emergency Medicine leaders of tomorrow and welcome you to the Ohio State Wexner Medical Center. Our goal is to provide you with the opportunity to excel and become a leader in your area of interest within Emergency Medicine. As a department, we continue to aspire to remain one of the top academic departments in the country and see our residency program as one of the crown jewels in our department.

#### **Jeffrey Caterino, MD, MPH**

*Professor and Chair*

*Department of Emergency Medicine*

*The Ohio State University Wexner Medical Center*



## Welcome from the Vice Chair of Education

As the Vice Chair of Education for Emergency Medicine, I am honored to present our program, dedicated to fostering a dynamic learning environment. Our mission is to equip our residents, fellows, and medical students with the skills and knowledge essential

to excel in the fast-paced and ever-evolving field of emergency medicine. We take immense pride in the close-knit, supportive community that characterizes our program.

Having trained at Ohio State, I hold a profound sense of pride and commitment to the program that shaped my education and career. It is a privilege to support the training of our fellows, residents, and students in the Department of Emergency Medicine. My leadership goal is to connect with and elevate each of our faculty members and learners to their highest potential. Our faculty and learners are the core of my dedication, and I firmly believe that choosing Ohio State will open numerous opportunities for growth and professional development.

Before assuming the role of Vice Chair, I served as a core faculty member, Associate Director of the Ultrasound Division, and Director of the Ultrasound Fellowship. These positions have allowed me to observe our learners and department from various perspectives, and one of my greatest joys is witnessing the growth and development of individuals within our team. It has been deeply rewarding to watch many progress from first-year medical students to residents, fellows, and beyond. Additionally, I have enjoyed seeing our department evolve with our learners and the ever-changing landscape of medicine.

Growth is a fundamental mission at Ohio State. We are committed to fostering the growth of our learners, encouraging the professional development of our faculty, and continuously evolving our program to meet the needs of our community and patients. We invite you to join us on this journey of growth and excellence.

**Creagh Boulger, MD, FACEP**  
*Professor and Vice Chair of Education  
Department of Emergency Medicine  
The Ohio State University Wexner Medical Center*



With an interest in Global Emergency Medicine and serving underserved communities, our program has many resources invested in global health initiatives. In my PGY-2 year, I was able to utilize a Kiehl Grant and travel to Ethiopia for a month-long rotation at Tikur Anbessa Specialized Hospital (TASH), the largest public hospital in Addis Ababa, Ethiopia. My time there was an eye-opening experience in health care disparities and sparked my passion to pursue a fellowship in Global Health.

The Ohio State University Emergency Medicine Program is filled with faculty and staff passionate in various specialties. If you have an interest in sports med, ultrasound, EMS, social medicine, global health, LGBTQ health care, med ed, research, administration, it's all available here!

– Saron Checkole, DO  
PGY-3 resident

## Residency Director's Perspective



Choosing the right emergency medicine training program is one of the most important decisions you'll make. Our program offers a comprehensive education within a supportive environment. Through our resident selection process, we look for highly motivated candidates who will become leaders in emergency medicine.

Our residents learn from a diverse group of faculty educators, many of whom have received local and national awards for research, clinical care and education. Significant time and resources have gone into producing an optimal learning environment. We've built our conferences around sound educational principles. We've also introduced a coaching program to help motivate residents to reach their maximum potential.

Our residency didactic experiences are thoughtfully planned and executed. The primary mode of information sharing is through small-group sessions led by faculty. There's a strong focus on improving clinical reasoning skills. Integrated in this learning experience are high-fidelity simulation exercises and procedural training sessions that occur as part of our conference schedule. There are joint conferences with many departments, such as Cardiology, Internal Medicine, Psychiatry and Trauma Surgery, which enhances resident education.

Our residents will hone their skills in a 110-bed emergency department complete with a state-of-the-art observation center and a comprehensive section devoted to the emergent care of cancer patients. The Ohio State University Wexner Medical Center serves as both a local hospital and a regional referral center; consequently,

our residents are exposed to a wide variety of patient cases and a patient population with high acuity. Exposure to pediatrics is through our sister hospital, nationally renowned Nationwide Children's Hospital, where our residents are supervised by board-certified pediatric emergency physicians. Our residents receive excellent training in trauma and critical care through experiences at the Ohio State Wexner Medical Center and our community partners.

Our Department of Emergency Medicine has gained international acclaim for scientific research. Faculty research interests are varied and include EMS, ultrasound, education, infectious disease, clinical operations and geriatrics.

Our program, through the comprehensive and individualized training offered, hopes to graduate emergency physicians with a strong personal identity who are self-directed lifelong learners, who are resilient and thoughtful, who are excellent clinicians with advanced clinical reasoning skills, and most importantly, who are committed to making a difference in their communities and in EM.

**Sorabh Khandelwal, MD**  
*The Samuel J. Kiehl III MD Chair in EM  
 Professor and Residency Program Director*



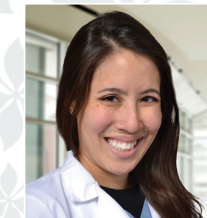
**Simiao Li-Sauerwine, MD, MSCR**  
 Associate Program Director



**Geremiha Emerson, MD**  
 Associate Program Director



**Krystin Miller, MD**  
 Assistant Program Director



**Jennifer Yee, DO**  
 Assistant Program Director

## By the Numbers

**Total beds licensed**  
 OSU Main OSU East  
 1,486 384

**Total Beds Staffed**  
 OSU Main OSU East  
 1,176 228

**# of ED beds**  
 OSU Main OSU East  
 116 29

**% of patients admitted**  
 OSU Main OSU East  
 39% 18.1%

**% of ICU admissions**  
 OSU Main OSU East  
 13.4% 7.2%

**Total # of ED visits**  
 OSU Main OSU East  
 74,450 45,226



## EM Residency Program

Year established	1981
Total # EM positions/year	16
Total # OEM positions/year	3
Total # EM/IM positions/year	2
Fellowship opportunities	8
Total alumni	421

## Emergency Medicine Residency

The Ohio State University Wexner Medical Center-affiliated Emergency Medicine Residency is a three-year program (PGY-1, 2, 3) designed to provide education and experience in the clinical, educational, administrative and research aspects of emergency medicine and its allied fields.

The clinical program is the cooperative endeavor of The Ohio State University Wexner Medical Center emergency departments at University Hospital and East Hospital, and the emergency department at Nationwide Children's Hospital. Annually, more than 200,000 patients are collectively treated in the emergency departments of these three facilities.

The ED provides an exceptional environment for learning and delivering outstanding care to our diverse patient population. Ohio State was one of the first hospitals in the country and one of only nine Ohio hospitals to be designated a comprehensive stroke center by The Joint Commission and the American Heart Association/American Stroke Association. Our emergency department at University Hospital is designated as a Level I Trauma Center, and the emergency department at East Hospital is a Level III Trauma Center. We've been designated by the American College of Emergency Physicians as a Level I Geriatric Emergency Department, providing the most comprehensive care to vulnerable older adults in the emergency department.

The Department of Emergency Medicine has full departmental status within The Ohio State University College of Medicine, and many of our faculty serve in administrative roles within the hospital and the College of Medicine.

The Ohio State Wexner Medical Center and the Department of Emergency Medicine are located on a large, unified university campus with outstanding academic and cultural environments. Our ED features observation, oncology, critical care, hyperbaric medicine, and trauma resuscitation pods.

Our other clinical sites are large, private local hospitals with numerous residency training programs, subspecialty support and a strong interest in clinical education.

## A Diverse And Supportive Learning Environment

The Ohio State University Wexner Medical Center, and in particular the Department of Emergency Medicine, recognizes and celebrates the importance of diversity. We strive to support a diverse, talented workforce that is inclusive of all individuals regardless of ancestry, ethnicity, sex, gender identity, sexual orientation or disability. We recognize and celebrate the opportunity to benefit from broad perspectives, characteristics and life experiences, and we strive to create working and learning environments where we'll benefit and thrive from our differences.

The department's Diversity, Equity and Inclusion Committee (DEIC), a resident and faculty-led committee, strives to support, promote and improve the diversity within our department and medical center. Primary programs and initiatives driven by this committee include:

### *Community Outreach and Engagement*

Aligning with current medical center and community initiatives to address youth trauma and gun violence; giving back together through "ED Volunteers" group; supporting Black-owned businesses; creating impact pipelines for high school and undergraduate students; and providing medical advice at monthly community outreach dinners.

### *Focused Data Collection*

Patient/community- and staff-centered needs assessments to identify equity gaps in patient care and residency education; providing paid summer research awards for medical students to study equity gaps in the ED.

### *Increasing Department Diversity*

Active participation by leadership in DEI organizations; recruitment and retention of residents and faculty from underrepresented groups; recruitment of a vice chair for Diversity and Inclusion; away rotation scholarship for medical students who are underrepresented in medicine.

### *Department Culture*

Mentorship for residents from underrepresented groups; creating safe work environments by offering on-shift support, resident empowerment and safe reporting systems; and creating avenues for providing honest feedback on culture.



"Within the Department of Emergency Medicine at Ohio State, we respect all individuals regardless of race, gender, disability or minority group. We believe that our diverse life experiences allow us to develop innovative ideas and better solutions to the issues that we encounter. We're active in the community that we serve and engage in bidirectional communication with our partners in the community to better understand current issues and build trust. We have a team of amazing clinicians, educators and researchers partnering with community stakeholders to improve justice, equity, diversity and inclusion for all."

– **Henry Young, MD**  
Vice Chair of Diversity, Equity and Inclusion for the Department of Emergency Medicine



## Resident well-being at Ohio State EM

The National Academy of Medicine has highlighted Ohio State's EM residency as a model for trainee well-being.

### *The Kiehl Endowment*

Ohio State Emergency Medicine has the exceptional privilege of having a \$2 million Kiehl Resident Well-being Endowment which is solely intended for the support of well-being for OSU EM residents. The endowment has allowed us to establish GROW (Gearing Residents for Overall Well-being), a comprehensive, evidenced-based program for physician well-being. Examples of GROW initiatives in specific well-being domains include:

- **Physical** – Healthy doc box snacks and a massage chair adjacent to the resident lounge, as well as locally sourced fruits and vegetables for residents through a community-supported agriculture subscription
- **Emotional** – Peer support initiatives and dedicated time with counselors through Ohio State's Employee Assistance Program during intern orientation and throughout the year
- **Spiritual** – Programs dedicated to reflection on meaning in medicine and a well-being library in the resident lounge
- **Occupational** – A robust professional development curriculum that covers the non-clinical skills needed for career success as a new attending, such as job finding and contract negotiation, as well as RAFFT (Resident and Faculty Females Together), our nationally-recognized Women in EM program, as well as a policy protecting parental leave for birth and non-birth parents and time for lactation on return from leave.
- **Financial** – In-conference didactics with personal finance and disability insurance experts
- **Intellectual** – Monthly journal clubs and robust mentorship of residents in scholarly work
- **Social** – Activities including monthly all-residency events, class nights off and an annual residency retreat

### *Kiehl Professional Development Grants*

These grants support the career development of Ohio State EM residents. In just the past few years, our residents have benefitted from grant-supported experiences that include:

- Fellow of the Academy of Wilderness Medicine (FAWM) certifications
- Ultrasound conference and education
- Extracorporeal membrane oxygenation (ECMO) course
- Critical care airway course
- Emergency cardiology away rotation
- Women in Medicine leadership course
- American College of Emergency Physicians teaching fellowship
- NASA aerospace medicine course

The Kiehl Endowment and GROW are led by director Simiao Li-Sauerwine, MD, and assistant director Kim Bambach, MD.



Emergency Medicine Pride is our new LGBTQIA+ group at Ohio State EM. This organization was founded during the 2022-2023 academic year with the goal of enhancing awareness and education around LGBTQIA+ EM topics.

Since our founding, we have collaborated with The Ohio State University medical student group LGBTQ+ and Allies in Medicine, implemented new curriculum for EM residents and added the names of LGBTQIA+ providers to a database of diverse faculty at Ohio State.

We welcome new members and look forward to seeing the continued growth and progress of this support group.

### **Samuel Kiehl III, MD**

Faculty Emeritus

Long-standing faculty member Samuel Kiehl III, MD, made a generous \$1 million gift to the Ohio State Department of Emergency Medicine Residency Program, which was matched by the department to create the Samuel J. Kiehl III, MD, Chair in Emergency Medicine endowment fund. In line with Dr. Kiehl's wishes, the annual funds from this endowed chair are used to enhance the resident curriculum of general wellness and individual growth and development.

## Emergency Medicine Residency Curriculum

### First Graduate Year

During the first year of the program, the resident will gain experience in a variety of disciplines relevant to emergency medicine. Residents will gain core experiences in pediatric emergency care, cardiology, anesthesia, obstetrics, orthopedics, toxicology (selective) and medical and surgical critical care. Residents will also complete an immersive ultrasound experience.

The Center for EMS offers exposure to prehospital care and experience in medical education.

### Second Graduate Year

During the second year, emphasis is placed on emergency medicine. This time focuses on development of progressive autonomy in patient management and development of teaching skills. In addition, the resident obtains advanced experience in a variety of areas, including trauma. The resident gains further experience and expertise in performing key procedures such as placement of central lines, airway management and emergency ultrasound.

### Third Graduate Year

The third year of the program provides the senior resident with the opportunity to accept responsibility for managing many patients simultaneously, while supervising and teaching junior-level house officers and students in the emergency departments. This graded responsibility helps the senior residents gain independence and expertise in managing the department.

Numerous electives are available to residents to enhance their education. Although unlimited possibilities exist, one popular elective is Community Emergency Medicine in Hawaii. The third-year resident can also participate in an immersive research experience during this time.



## Curriculum Highlights

- Flipped classroom resident conferences
- Coaching program
- Targeted bedside coaching
- 1:1 Procedural education
- Emphasis on feedback
- Focus on leadership
- Resident wellness and professional development program (funded by \$2M Kiehl Endowment)
- Longitudinal tracks
  - Administrative
  - Critical care
  - EMS
  - Global health
  - Research
  - Pediatrics
  - Ultrasound
  - Sports Medicine
  - Wilderness
  - Med Education

## EM Program Curriculum

### PGY-1 Curriculum (13 blocks)

Orientation (Ohio State and Nationwide Children's Hosp.) 1 Block	Adult Emergency Medicine (University Hospital) 4 Blocks	Adult Emergency Medicine (East Hospital) 1 Block
Cardiology ICU 1 Block	Orthopaedics (OSU or Grant) 1 Block	Medical Intensive Care Unit (Ohio State) 1 Block
Pediatric Emergency Medicine (Nationwide Children's Hospital) 1 Block	Anesthesia/ Ultrasound 1 Block	2 wks EMS/ 2 wks Surgical ICU 1 Block
Ob/Gyn (Ohio State)/Toxicology (Poison Center) 1 Block		

### PGY-2 Curriculum (13 blocks)

Adult and Pediatric Emergency Medicine (University, East and Nationwide Children's hospitals) 8 Blocks	Community Emergency Medicine (Mount Carmel or Fayette County sites) 1 Block*	Cardiovascular ICU (Ross Heart Hospital) 1 Block
Elective 1 Block (Can be longitudinal)	2 wks PICU/ 2 wks US 1 Block	Trauma Surgery Critical Care (Grant Hospital) 1 Block

### PGY-3 Curriculum (13 blocks)

Adult and Pediatric Emergency Medicine (University, East and Nationwide Children's hospitals) 10 Blocks*	Ultrasound (Ohio State) 0.25 Blocks	Medical Intensive Care Unit (Ohio State) 1 Block
Elective 1 Block	Selective (Hawaii/ International) 1 Block	

*\*Longitudinal pediatric experience (Nationwide Children's Hospital) equivalent to two blocks. Each resident receives three weeks of vacation per training year during designated blocks.*



## Clinical Skills Education and Assessment Center

The changing nature of medical practice and the national demand for accountability in medical education highlight the need for a leading-edge clinical skills center. National accrediting bodies are challenging medical education institutions to demonstrate that medical students and residents possess the requisite knowledge, skills and attitudes essential to the practice of medicine.

The Clinical Skills Education and Assessment Center (CSEAC) at The Ohio State University Wexner Medical Center is a state-of-the-art training center simulating actual patient care experiences. The facility features patient room encounters, patient models, standardized patients, high-tech patient simulators and electronic monitoring stations. ICU, ED and OR rooms are offered, as well as dedicated space for ultrasound training and hands-on procedural training. The center provides exciting opportunities for comprehensive interdisciplinary education. We anticipate continued acquisition of high-fidelity simulators to meet a broad range of educational needs.

## Resident Conferences

Emergency Medicine conferences take place weekly every Wednesday morning and include five hours of small-group discussions, morbidity and mortality sessions focusing on cognitive errors, simulation and procedure sessions, interactive lectures and case conferences. The format of this educational setting is specifically designed to be innovative and interactive.

Emergency Medicine conferences are attended by education faculty and are considered protected times for residents working in the Emergency Department and nearly all off-service rotations. Conferences promote self-directed learning using a “flipped classroom” model. In preparation for the weekly small-group discussions, residents review various educational resources pertaining to the topics being covered. Small-group sessions, which are evidence-based, are led by Emergency Medicine faculty. Teaching faculty strive to maximize the use of technology in both the clinical and didactic settings. Asynchronous learning opportunities are also present, and a question bank is provided to each resident.

Emergency Medicine residents participate in weekly simulation and procedural sessions to practice skills pertinent to emergency medicine processes and procedures.

As part of the curriculum, visiting professors of national prominence are invited to share their expertise in specific areas of Emergency Medicine.

During the first year of residency, additional lecture sessions are scheduled during the month of July to provide an overview of emergency medicine and an orientation to the curriculum. At Ohio State, emphasis is placed on active learning and engaging, thought-provoking educational formats.



“Our partnership with CSEAC allows for comprehensive and innovative emergency medicine simulation curriculum. We focus on refining leadership, communication, situational awareness and crisis resource management skills. From disaster preparedness to Wilderness Medicine Day, simulation competitions to multidisciplinary in situ scenarios, we prioritize providing our residents with the tools they need to succeed.”

**– Jennifer Yee, DO**  
Emergency Medicine Simulation Director, Assistant Program Director





## Pediatric Emergency Medicine

Nationwide Children’s Hospital (NCH) is one of the largest children’s hospitals in the country and the pediatric tertiary referral center and referral Level I Trauma Center of central Ohio. The ED sees more than 90,000 patients annually. NCH has multiple subspecialty training programs and has multiple departments nationally recognized for their high-quality pediatric care. NCH medical center is continuously growing, including a freestanding ED in the northern Columbus area and a dedicated pediatric psychiatric hospital. Resident rotations allow for outstanding clinical experience and extensive bedside teaching in a variety of general pediatric, trauma and critical care experiences.



NCH also has multiple additional training programs including a Pediatric Emergency Medicine (PEM) Fellowship and the ED is staffed 24/7 with at least two PEM fellowship-trained attendings. Residents transition to a longitudinal or a year-round integrated shift experience in PGY-2 to 5 years at the main hospital in addition to integrated shifts at the freestanding ED staffed 24/7 with PEM attendings. Residents’ experience at NCH during residency will prepare them for independent practice seeing pediatric patients at any facility.

## Trauma Services

The Ohio State University Wexner Medical Center and Nationwide Children’s Hospital both have active trauma services with Level I Trauma Center designations. The Ohio State East Hospital has a Level III Trauma Center designation. Emergency Medicine residents are an integral part of the trauma team in all trauma resuscitations.



## Electives

Residents have the opportunity to explore their interests through dedicated elective time in PGY-2 and PGY-3 of the residency program. One popular elective in the PGY-3 year is Community Emergency Medicine in Hawaii. Residents can take advantage of a learning opportunity at Kaiser Permanente Moanalua Medical Center in Honolulu or Hawaii Pacific Health’s Pali Momi Medical Center.

## Ultrasound

The Ohio State University Department of Emergency Medicine has a nationally recognized ultrasound program, and ultrasound has been part of our residency for more than 15 years. The ultrasound division has 10 members, many of whom serve on national committees and in leadership roles. The program has an active emergency medicine ultrasound fellowship and a wonderful relationship and newly created primary care ultrasound fellowship with the Pediatric Emergency Medicine program at Nationwide Children’s Hospital. As leaders in ultrasound education, our faculty lecture internationally and are highly involved in national ultrasound organizations.

With the goal of creating leaders in the field, all residents will receive leading-edge education in emergency point-of-care ultrasound, spending six weeks during residency on ultrasound rotations, with the option of more time as an elective. In addition to the core curricular experience, nearly a third of our residents opt into the ultrasound track, providing a mini-fellowship experience with teaching time, advanced scans and extra research opportunities. Residents may also elect to gain fellowship-level education and mentorship through an advanced ultrasound track program.

I chose Ohio State because of the program’s dedication to mentorship, diversity and inclusion, opportunity and flexibility to tailor my residency years to my specific career goals. While a student in The Ohio State University College of Medicine’s MedPath Program, I was interested in Emergency Medicine and was paired with Katherine Buck, MD, as my EM mentor. At the time, she was a second year EM resident at Ohio State. As I advanced through medical school, Dr. Buck played an integral role, guiding me through medical school rotations, residency application and interviews and more. To this day, she continues to be a meaningful mentor.

As a rotating fourth-year medical student, I had the opportunity to interact with most of the EM department faculty and discovered that they are extremely invested in mentoring and helping us succeed on this journey. All we have to do is ask!

As the first person in my immediate and extended family to attend college, graduate school and medical school, access to mentors was scarce, but I was able to find excellent mentorship within Ohio State’s EM Department to help me succeed in this career field. At Ohio State, I have a team of diverse mentors willing to help me develop the tools necessary to make the most of my residency training and be a stellar Emergency Medicine physician.

- **Mariana Feliu, MD**, PGY-2 resident



## National Conferences

The residency provides the opportunity annually for the PGY-1 and PGY-3 classes to attend a conference. Currently, the PGY-1 class attends the SAEM Annual Meeting, and the PGY-3 class attends the ACEP Scientific Assembly. Time is protected clinically for attendance at these conferences, and residents may choose to use their CME funds to cover conference expenses. This conference time has been proven to be both educational and fun. Many residents value the bonding experience with co-residents and faculty, the dedicated educational experience and the opportunity to become involved in emergency medicine at a regional and national level. The department will also support conference attendance for residents who have original research accepted for presentation and those serving on national committees.

## Research and Scholarly Activity

Residents are required to participate in scholarly activity during their training. This may be a basic science project, a medical education project, a clinical or epidemiological study, a case report or a collective clinical review of publishable quality. The curriculum teaches the critical evaluation of biomedical literature and research methodology as well as evidence-based medicine principles to learn to critically review literature. Elective time may also be used to supplement this experience. The Emergency Medicine faculty are active in all facets of research and scholarly activity, and serve to guide residents through this requirement.

Residents are encouraged to publish and present at regional or national meetings during their training.

## Emergency Medical Service (EMS) Experience

Prehospital care is emphasized throughout the residency program. In addition to accompanying paramedic teams on emergency calls, residents will be directly involved in the planning and operation of the EMS systems. Since 2004, the Center for EMS at The Ohio State University Wexner Medical Center has been dedicated to improving outcomes for cardiac arrest, trauma and other patients in our community. A cooperative effort between the Department of Emergency Medicine and the Center for EMS (CEMS) at the Ohio State Wexner Medical Center seeks to provide an educational and research resource to the central Ohio EMS community. By uniting the efforts of the prehospital provider with the hospital-based team, the CEMS is dedicated to providing everyone in the community the best opportunity for survival and improved quality of life.

MedFlight is the critical care transport service that serves central Ohio. It is operated by the Ohio State Wexner Medical Center and OhioHealth. Online medical control for the helicopter and mobile ICU is provided by the Emergency Department at Ohio State. Residents may also elect to participate in patient transports with the crew of MedFlight and will participate in physician medical direction of the program.

## United States Air Force Partnership

The Ohio State University Wexner Medical Center is one of five civilian residency programs that partner with the United States Air Force through the Operational Graduate Medical Education program. Through a separate military match, we have up to three positions available each year. OEM Air Force residents train alongside our other residents, while also being supported to maintain military obligations through elective time.



## Research 2010-2024

**Ohio State ranked No. 13 among departments of EM in NIH funding in 2023.**

**Total College of Medicine FY 24 research funds ..... \$477 million**  
(More than \$245 million from NIH)

### Department of EM

FY24 external grants.....	\$10 million
FY24 NIH funding.....	\$7 million
Peer-reviewed publications.....	68
Faculty who are PI of NIH awards .....	12

Department research areas: resuscitation, cardiovascular, geriatrics, infectious disease, neurologic emergencies, acute lung injury/critical care, medical education and simulation.

For more information, visit  
**em.osumc.edu**



@OhioStateEMRes



**THE OHIO STATE  
UNIVERSITY**

WEXNER MEDICAL CENTER