



2017 Rehabilitation Services

Rehabilitation Services Profile at The Ohio State University
Wexner Medical Center Dodd Rehabilitation Hospital



THE OHIO STATE UNIVERSITY
WEXNER MEDICAL CENTER

The Nation's Best Right Here in Central Ohio

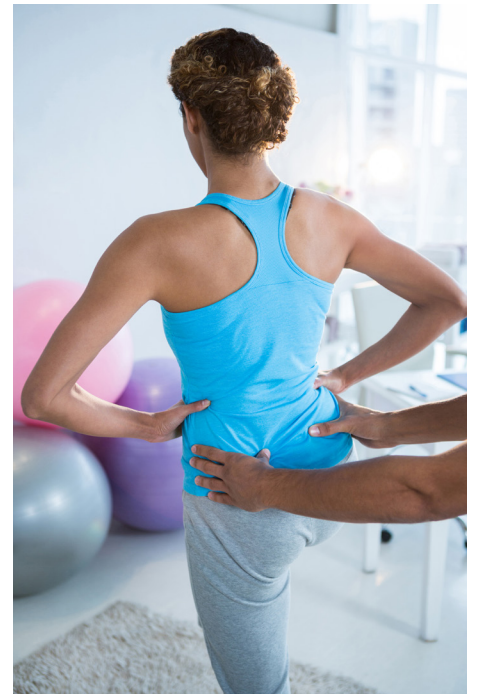
Accredited by CARF (Commission on Accreditation of Rehabilitation Facilities)



As a consumer of health care and rehabilitation services, you have a choice. Choose a facility that has demonstrated a long-standing commitment to meet the nation's highest standards of quality, consumer satisfaction, safety and outcomes measures. Dodd Rehabilitation Hospital embodies this commitment to continuously improve service quality and to focus on the satisfaction of our patients by voluntarily participating in the CARF International surveying process. CARF International is an independent, accrediting body of health and human services. CARF accreditation means that Dodd Rehabilitation Hospital has demonstrated compliance to proven standards for business practices and is strongly committed to continuous quality improvement. Dodd Rehabilitation Hospital's commitment to excellence is periodically evaluated by on-site surveys and reconfirmed annually.

DODD REHABILITATION HOSPITAL: CARF ACCREDITED SINCE 1975

- Accredited since 1975 in the area of Inpatient Rehabilitation Programs - Hospital
- In 1984, achieved CARF accreditation in General Rehabilitation Program and Spinal Cord System of Care
- In 1987, Dodd Rehabilitation Hospital became the first CARF-accredited Brain Injury Specialty Program in the state of Ohio
- In 2008, Dodd Rehabilitation Hospital added to its list of excellence by being the first in Ohio and third in the country to be awarded CARF accreditation for our Inpatient Stroke Program
- In 2015, we earned the distinction of being the first in Ohio, second in the nation and third in the world to achieve CARF accreditation for our Inpatient Cancer Rehabilitation Program



Rehab Spotlight: ZeroG

ZeroG is a high-tech robotic system that provides dynamic body-weight support or static support. ZeroG's robotic trolley automatically moves with the patient, so the patient feels very little horizontal forces, while important training data is recorded in a database to track recovery. ZeroG includes redundant sensors throughout the system that cross-check critical signals and software monitoring at 1,000 times per second.



Rehab Spotlight: Recovery Rapid



Recovery Rapids is a computer-based game that allows us to deliver rehabilitation therapy in the homes of people who have had a stroke, traumatic brain injury or other condition that leaves them with significant impairment in one arm. The game uses Microsoft Kinect and models real-life activities such as rowing a kayak and picking up objects. It includes 30 hours of unique gameplay, so use does not become monotonous. It was designed with suggestions from patients and centers largely on user preferences. The game was developed by Ohio State Physical Medicine and Rehabilitation researcher, Lynne Gauthier, PhD, in collaboration with computer scientists and rehabilitation experts across Columbus.

OUR INPATIENT REHABILITATION SERVICES AT DODD REHABILITATION HOSPITAL OUTCOMES

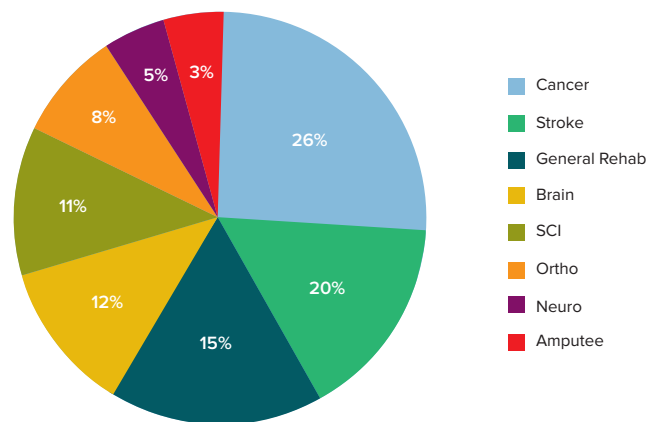
In 2017, 1,125 patients and their caregivers turned to Ohio State's Inpatient Rehabilitation Services at Dodd Rehabilitation Hospital for their needs. While a majority of these patients came from Ohio and the surrounding states, our team treated patients as far away as South Carolina, Illinois and Florida. The average age of patients treated in 2017 was 57, with ages ranging from 17 to 95.

| AGE | 2017 |
|--------|------|
| 16 | 0 |
| 17 | 6 |
| 18 | 4 |
| 19-30 | 95 |
| 31-40 | 84 |
| 41-50 | 154 |
| 51-60 | 238 |
| 61-70 | 326 |
| 71-80 | 167 |
| 81-90 | 48 |
| 91-100 | 3 |

PATIENTS TREATED AT OHIO STATE'S INPATIENT REHABILITATION SERVICES IN 2017

Patients treated at Dodd in 2017 by Diagnosis

| Diagnosis | # of patients | |
|---------------|---------------|-----|
| Cancer | 289 | 26% |
| Stroke | 226 | 20% |
| General Rehab | 171 | 15% |
| Brain | 136 | 12% |
| SCI | 124 | 11% |
| Ortho | 92 | 8% |
| Neuro | 55 | 5% |
| Amputee | 32 | 3% |

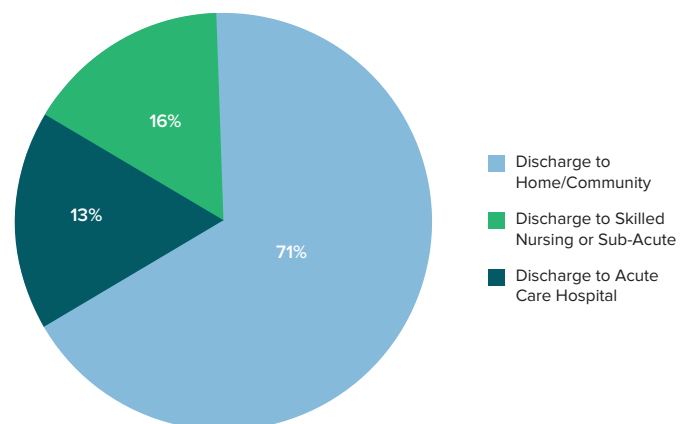


DISCHARGE TO HOME RATE

In 2017, the overall (all patient diagnoses combined) inpatient rehabilitation discharge to home rate was 71% of patients, while 16% were discharged to an acute care hospital for further treatment, and 13% were discharged to an alternate level of care (skilled nursing facility or sub-acute rehabilitation setting).

Patients treated at Dodd in 2017 by Diagnosis

| 2017 Discharge to Home Rate | |
|-------------------------------------------|-----|
| Discharge to Home/Community | 71% |
| Discharge to Skilled Nursing or Sub-Acute | 13% |
| Discharge to Acute Care Hospital | 16% |



OHIO STATE'S INPATIENT REHABILITATION SERVICES AT DODD REHABILITATION HOSPITAL 2017 OUTCOMES SNAPSHOT

Our team measures patient outcomes using several indicators including patient discharge location, overall satisfaction of patients and the standard Functional Improvement Measure (FIM™), which reflects overall and specific improvement in activities of daily living including bathing, dressing, feeding, ambulation and motor functions.

- Average number of hours of therapy per day for all groups is 3 hours - 5 days per week. Therapy included: physical, occupational and speech/language.
- Patients also received recreational therapy and neuropsychological services in addition to the 3 hours of OT/PT/ST.

| | Spinal Cord Injury (5) | Brain Injury (5) | Stroke (5) | Neurological (5) | Orthopaedic (3,5) | General Rehabilitation (4,5) | Oncology (6) |
|-------------------------------------------------------------------------------|-------------------------------|-------------------------------|-------------------------------|-----------------------------|-------------------------------|-------------------------------|-------------------------------|
| Number of Patients Discharged 2017 | 175 | 231 | 252 | 62 | 167 | 238 | 289 |
| Case Mix Index (1) | 1.44 | 1.31 | 1.29 | 1.16 | 1.08 | 1.15 | Not Available |
| Average Age | 55 years | 52 years | 62 years | 49 years | 58 years | 59 years | 60 years |
| % Male % Female | Male 62% Female 38% | Male 60% Female 40% | Male 62% Female 38% | Male 44% Female 56% | Male 47% Female 53% | Male 50% Female 50% | Male 51% Female 49% |
| Average Length of Stay | 16.99 days | 15.35 days | 14.74 days | 14.55 days | 12.48 days | 12.91 days | 12.71 days |
| Average Improvement in Function from Admit to Discharge Using FIM™ (2) | 19.32 points | 21.20 points | 19.99 points | 20.94 points | 21.31 points | 18.91 points | 16.5 points |
| Average FIM™ change Per Day (2) | 1.41 points | 1.70 points | 1.53 points | 1.60 points | 1.99 points | 1.60 points | 1.38 points |
| Patients that achieved predicted outcomes at discharge and FIM™ goals | D/C 85% (120/141 patients) | D/C 83% (169/204 patients) | D/C 80% (174/218 patients) | D/C 86% (50/58 patients) | D/C 87% (131/150 patients) | D/C 87% (153/176 patients) | D/C 87% (180/208 patients) |
| | FIM 74% (134 patients) | FIM 73% (181 patients) | FIM 71% (205 patients) | FIM 72% (54 patients) | FIM 78% (139 patients) | FIM 77% (161 patients) | FIM 71% (183 patients) |
| Discharge to Home/Community | 69.7% (122 patients) | 72.2% (167 patients) | 69.8% (176 patients) | 80.68% (50 patients) | 78.4% (131 patients) | 64.29% (153 patients) | 62.28% (180 patients) |
| Discharge to Skilled Nursing Facility | 9.1% (16 patients) | 12.5% (29 patients) | 16.6% (42 patients) | 12.90% (8 patients) | 11.38% (19 patients) | 9.66% (23 patients) | 8.30% (24 patients) |
| Discharge to Acute Care Hospital | 19.4% (34 patients) | 12.99% (30 patients) | 13.49% (34 patients) | 6.45% (4 patients) | 10.18% (17 patients) | 26.05% (62 patients) | 28.03% (81 patients) |

*Source: eRehabData

1. Case Mix Index (CMI): A standard measure of medical complexity of the patient's service. The higher the CMI, the more medically complex the patient's needs will be.
2. Functional Independence Measure (FIM™): An 18 item scale measuring improvement in motor and cognitive ability.
3. Orthopedic category includes patients with amputations.
4. General Rehabilitation category includes cardiac, pulmonary and debility patients.
5. Oncology patients are included in the category if the cancer affected function in that area.
6. Total number of oncology patients: This number represents patients that have also been counted in the rehab. impairment category where function was affected by the cancer e.g. brain tumor patient also counted in the brain injury category, spine tumor patient also counted in the spinal cord injury category, etc.

PATIENT SATISFACTION RATE

Our team measures patient satisfaction through a Press Ganey survey. Patients receive the survey after they are discharged from inpatient rehabilitation. In FY17, more than 92% of the patients surveyed reported that they would recommend Ohio State's Inpatient Rehabilitation Services at Dodd Rehabilitation Hospital to others.

To speak to a Dodd Rehabilitation Hospital Admissions Coordinator call: **614-293-3824**.
For outside referrals call: **614-293-3824** or **614-293-4630**.

Dodd Rehabilitation Hospital referral fax line: **614-293-3198**.

For additional information, log on to wexnermedical.osu.edu/rehabilitation.



THE OHIO STATE UNIVERSITY
WEXNER MEDICAL CENTER